



INDUSTRIAL SECTOR

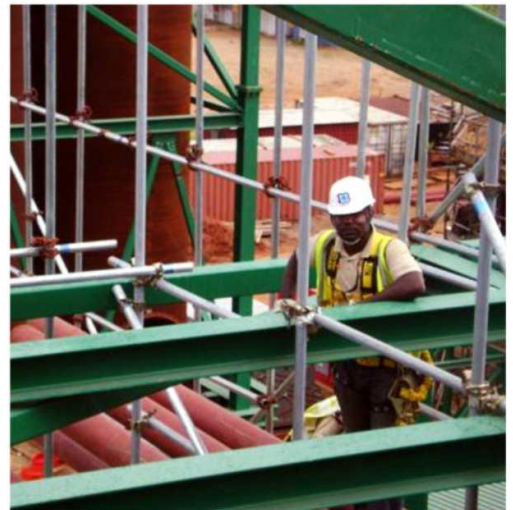


OVERVIEW

SDEM Erectors Nigeria Limited has over 30 years of experience in Industrial erection projects in the country.

We have rendered services to clients across various industrial sectors including breweries, food processing, glass, cement and chemical process plants.

SDEM has developed a reputation for quality, safety and environmental awareness in its operations which has made us a preferred supplier to our numerous clients.



INDUSTRIAL SERVICES

Our Industrial Projects Scope includes the following:

- Installation of piping and storage systems; stainless, carbon & GRE piping, silos & storage tanks.
- Civil construction, structural Steel fabrication and cladding erection works, cable trays etc
- Mechanical installation of rotating and stationary equipment
- Installation of utilities including, power systems, compressed air, fire fighting equipment and boilers.

INDUSTRIAL SECTOR - FEATURED PROJECTS



Project: Consolidated Breweries
Ijebu Ode

Services: Steel and GRE piping
(8000 T), mechanical, Steel
structure erection (1000 T) "33"
Export Extension Project

Period: 2000-2005



Project: Ceramic Factory
Building Project – For WEST
AFRICAN CERAMIC

Services: Fabrication & Erection
of Ceramic Factory Building in
Ajaokuta

Period: 2009 – 2010



Project: Aba Glass Bottling Plant
for Glassforce

Services: Engineering,
Procurement and installation of
all piping and cabling of the
factory.

Period: 2002 - 2003

CONTACT

No 77B, Lafajaji Street Dolphin Estate, Ikoyi, Lagos, Nigeria.
Tel: +234 803 402 0893, +234 806 373 7127 +234-1-461 0812